

There is a real buzz around the Tollfield campus with the Christmas activities that are taking place. The students are very keen every day to find the Elf, we have a lucky winner everyday drawn from the correct answers. This week in form we will be working away from our usual programme, to allow us to dress the campus with handmade decorations. Students will be challenged to make snowflakes, Victorian houses and Christmas characters to decorate their form rooms. The best decorated form will win a prize. We are also focusing on Acts of Kindness and the charitable spirit of Advent. So, if your child offers you a cup of tea after a long day at work, you will know that they have been inspired by this challenge. In assembly this week students that have one hundred percent attendance for one term have been issued with a badge to wear on their uniform.

Mrs Broadbridge – Assistant Headteacher



REVIEW OF THE WEEK

LAST CHANCE TO BUY! We still have a number of items left to sell - we will be putting them in the canteen for Staff, Students and Parents to buy after school at the Mar... [See more](#)

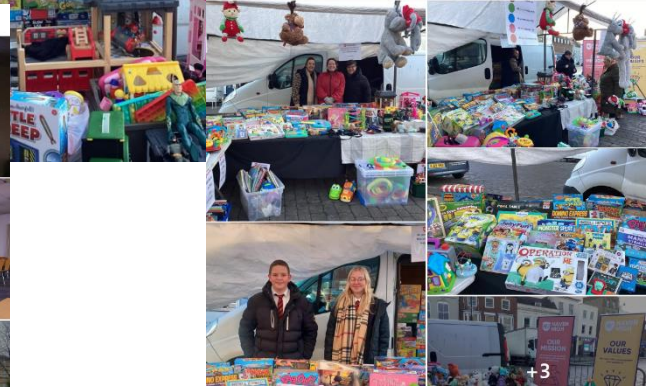
Connor performed at the Boston Christmas Market in Bostons Got Talent and won his age group - HH staff are super proud #effort #engagement #excellence #AmbitiousTogether



Yesterday some year 11 students went to look round Bishop Grosseteste University in Lincoln, a small university which is well known for its teacher training courses amo... [See more](#)



Today Haven High are standing on Boston Market UK - please do come and support us - raising money to help those in our community in need this christmas Boston Borough Council #Engagement



Follow us on Facebook www.facebook.com/HavenHighAcademy or X www.x.com/HavenHigh

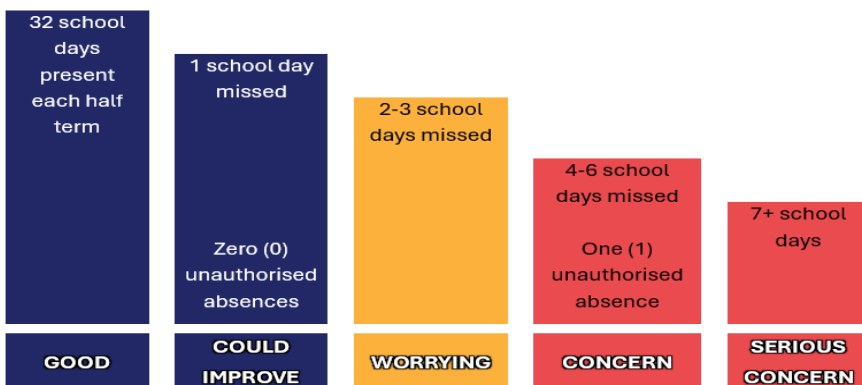
Attendance Matters

WHAT DO WE MEAN BY 'GOOD ATTENDANCE'

At Haven High we know that attending school every day is important. When a student attends frequently, they do better, gain confidence, are likely to have better mental health and can push themselves further to achieve more. Ideally, children should attend every school day. There are 32 school days in the average half term, and we expect learners to be in school for all of them.

Missing just 3 days in a half term is approximately the same as having one day off every 2 weeks. We know that in the world of work, no employer would accept that level of absence and so we need to teach our children the importance of turning up every day.

EXPECTED ATTENDANCE FOR EACH HALF TERM



Every day off is 6 missed lessons and 6½ hours in school. The work missed in every lesson needs to be caught up in the children's own time.

A child who misses 5 school days – equivalent to a week – will soon start finding it challenging to catch up, which can spiral into further absences.

Welcome to the Staff

We would like to introduce some of the key staff your young person will encounter...

“Hi, my name is Nick, I am the Data manager here at Haven High for the last year and a half. This was a new venture for me as Previously I had worked for the NHS for 14 years as a hospital manager. My role is to put all the timetables together for the students and manage the school’s data systems. I am based on the Marian site but my work overseas Tollfield campus as well. I enjoy helping supporting staff and students whether that’s accompanying staff on school trips or with general timetable issues. In my spare time I help coach U14’s football for Fishtoft where I enjoy helping the children learn new skills and improve on their journey.

Mr Massingham – **Data Manager**
Nick.massingham@havenhigh.net

My name is Hayley, and I have been working as a teaching assistant at Haven High Tollfield campus since 2021. I currently support the year 7s which I really enjoy. After starting in a preschool and then primary when my own children were younger, I feel I can help and support the students with their transition into Secondary. I enjoy seeing the students achieve their potential and supporting them to develop their self-esteem and independence.

Mrs Bruce – **Teaching assistant**
Hayley.bruce@havenhigh.net

I am Mrs. Ellerby. I have been teaching English at Haven High for eight years. I enjoy seeing my students get involved in the subject and really understand how language affects the way we view the world and the people in it. I enjoy rugby, films, crafting and, of course, reading. I try and be there to support all of my students to the best of my ability with any issues they may have. Whether this be with their work or calming down from feeling angry, I try to ensure that every student gets the help and support they need.

Mrs Ellerby – **Teacher of English**
Sorcha.ellerby@havenhigh.net

Hi, I am Mr Marriott and I am part of the hard-working and dedicated PE team. I have taught in multiple schools around Lincolnshire. I have a Physical education degree and graduated from Bedfordshire University in 2017. I enjoy taking students to different fixtures to show off their skills against other schools in and around Boston. I also enjoy getting the opportunity in school to teach some cooking lessons and thoroughly enjoy the practical lessons getting to see some of the amazing food students make.

My motto is that you will always need to practice to get better at anything. ‘Practice does not make it perfect; it will make it permanent

Mr Marriott – **Teacher of PE**
Sam.marriott@havenhigh.net

We would also like to encourage students (and their parents) to contact us with individual successes, both in school and in their wider lives and the community. We are passionate about celebrating the success of all our students in whichever field that may be.

ON THE HORIZON

DATE	EVENT	NOTES
9 th December 2024	Advent Acts of Kindness PSHE- Lucian Moon music	Bringing Christmas Cheer to students nearest and dearest.
10 th December 2024	Christmas decorations begin	Fast pass for the canteen up for grabs- The best decorated form room wins!
11 th December 2024		
12 th December 2024		
13 th December 2024		

Curriculum Plan

		This week students have learnt	Next week students will learn
Maths	Year 7	Calculate missing angles using properties of 2D shapes	Identify the symmetries of all 2D shapes and name them
	Year 8	Calculating volume of 3D shapes	Calculating surface area of 3D shapes
English	Year 7	Using inference to explain meanings	Understanding character development
	Year 8	Reading and writing assessments	The Tempest Act 3
Religious Studies	Year 7	Knowledge Check	Scientific beliefs about Creation
	Year 8	Morality	Arguments against God
PSHE	Year 7	Assessment	Unifrog - Exploring possibilities: dream jobs
	Year 8	The Monarchy and Charles III	Politics, debates and parliament
PE	Year 7	Basketball - Pivoting and Shooting Health Related Fitness - Borg Scales and Fartlek Training	Basketball - Lay-ups and Defending/Rebounding Health Related Fitness -Interval Training and Overload
	Year 8	Basketball - Pivoting and Shooting Health Related Fitness - Borg Scales and Fartlek Training	Basketball - Lay-ups and Defending/Rebounding Health Related Fitness -Interval Training and Overload
History	Year 7	Assessment	Reteach
	Year 8	The underground railroad	How did enslaved people resist?
Geography	Year 7	Will the River Witham flood?	Why are there so many farms around here?
	Year 8	Reefs and marshes: What are they?	Reefs and marshes: What plants and animals do they have?
Art	Year 7	Self Portraits; final weeks	Painting Van Gogh style
	Year 8	Self Portraits; final weeks	Painting realistically
Music	Year 7	Keyboard skills - treble clef	More keyboard skills
	Year 8	Keyboard skills - treble clef	More keyboard skills
French	Year 7	Revision for assessment	Assessment and feedback
	Year 8	Revision for assessment	Assessment and feedback
Spansih	Year 7	Revision for assessment	Assessment and feedback
	Year 8	Revision for assessment	Assessment and feedback
Design Technology	Year 7	continuing with a practical task on a maze game	
	Year 8	continuing with a practical task on a hand eye coordination game	

Notices

Clubs and enrichment activities on offer this term...

Monday	
Lunch	After school
Cheerleading – Sports Hall Mindfulness colouring – A3 Homework drop-in and study skills – A1 Wii Club – A2	Homework club – E1 Dungeons & Dragons – E3
Tuesday	
Lunch	After school
Homework and drop-in sessions – A1 Tabletop RPG – E3 Sparx Maths – E1	Netball – Sports Hall Football – Field Homework club – E1
Wednesday	
Lunch	After school
Media club (1pm) – A1 LGBTQ+ allies – A1 Geography film club – A5 Just Dance – Music room Netball – Sports Hall	Rugby (boys) – Field (bring kit) Homework club – E1
Thursday	
Lunch	After school
Homework and drop-in sessions – A1 Sparx Maths – E1 French film club – T3 Karaoke – M2	Dodgeball – Sports Hall Homework club – E1
Friday	
Lunch	After school
Homework and drop-in sessions – A1 Crochet – E3 Basketball – Sports Hall Puzzle club – SSU	

BIG THANK YOU FROM US TO YOU

Thank you again for your support with donating items for our Toy Drive. We held our sale on Boston Market on Wednesday, and we raised an amazing £319. We could never have done this without your generosity.



All money raised from sales will be going towards supporting those in our community that may be in need this Christmas.



Homework

All students will receive the following homework:

Maths, English and Science - weekly
Reading - 2 x 20 minutes per week (monitored in library lessons)

Humanities and MFL - fortnightly

All other subjects - twice per half term
Homework tasks should take approximately 30 minutes to complete